



Edge Pro with Comms Installation Manual

Version 1.0

Revision History

| Version | Date | Description | Author |
|---------|--------|-----------------|--------------|
| 1.0 | 4/2025 | Initial release | M. Covington |
| | | | |
| | | | |

Copyright

The Rekor Systems products described in this document may include copyrighted Rekor Systems software. Laws in the United States and other countries preserve for Rekor Systems, Inc. to retain certain exclusive rights for copyrighted software. Accordingly, any copyrighted Rekor Systems software contained in the Rekor Systems products described in this document may not be copied or reproduced in any manner without the express written permission of Rekor Systems, Inc.

© 2025 Rekor Systems, Inc. All Rights Reserved

No part of this document may be reproduced, transmitted, stored in a retrieval system, or translated into any language or computer language, in any form or by any means, without the prior written permission of Rekor Systems, Inc.

Furthermore, the purchase of Rekor Systems products shall not be deemed to grant either directly or by implication, estoppel or otherwise, any license under the copyrights, patents, or patent applications of Rekor Systems, except for the normal non-exclusive, royalty-free license to use that arises by operation of law in the sale of a product.

Disclaimer

Please note that certain features, facilities, and capabilities described in this document may not be applicable to or licensed for use on a specific system or may be dependent upon the characteristics of a specific scenario or configuration of certain parameters. Please refer to your Rekor Systems Support at support.rekor.ai for further information.

Trademarks

REKOR, REKOR DISCOVER, REKOR COMMAND, REKOR SCOUT and REKOR EDGE are trademarks or registered trademarks of Rekor Systems, Inc. and are used under license. All other trademarks are the property of their respective owners.

Contents

| | | |
|-------|--|----|
| 1 | Overview..... | 1 |
| 1.1 | Packing List..... | 1 |
| 1.2 | Cable Connections | 1 |
| 2 | Installation | 2 |
| 2.1 | SIM Card Installation (If not already installed) | 2 |
| 2.2 | Sun Shield Cover | 4 |
| 2.3 | Mounting Bracket Assembly | 5 |
| 2.4 | Pole Mounting..... | 6 |
| 2.5 | External Wall Mounting..... | 7 |
| 2.6 | Cable Connections | 9 |
| 2.6.1 | Safety Precautions | 9 |
| 2.6.2 | Power Cable Connection..... | 9 |
| 2.6.3 | Ethernet/POE Connection..... | 10 |
| 2.6.4 | Cable Waterproofing and Insulation..... | 10 |
| 3 | Installation Checklist..... | 11 |

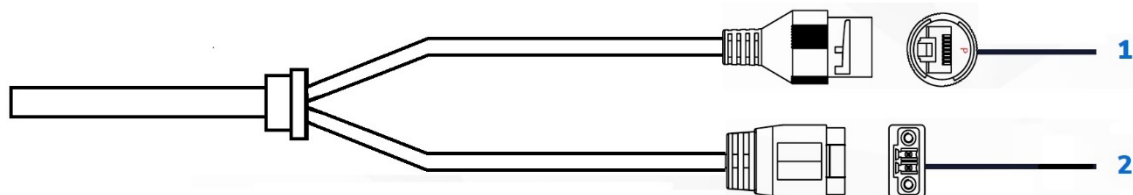
1 Overview

1.1 Packing List

| Component | Pieces |
|---|--------|
| Camera | 1 |
| Drilling sticker | 1 |
| Power terminal | 1 |
| Crimping terminal (support 0.75mm ² and 1.0mm ² cable) 2 | 2 |
| Allen wrench (M4) | 1 |
| Waterproof connector for network cables | 1 |
| Quick Start Guide | 1 |
| Expansion tube | 4 |
| Tapping screw | 4 |
| Sun shield cover | 1 |
| Junction box (mounting bracket with premade rubber gromet and hardware as shown in picture) | 1 |
| Antenna L Connectors | 2 |
| Antennas | 2 |

1.2 Cable Connections

| No. | Connector | Description |
|-----|-----------------|---|
| 1 | LAN/POE | Ethernet/POE connection. This interface supports POE. |
| 2 | DC 12V+/DC 12V- | Power input interface. DC12V(9.0V~15.0V) |

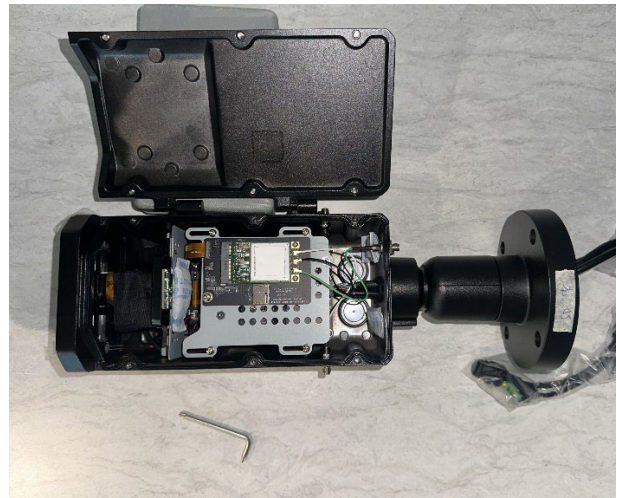
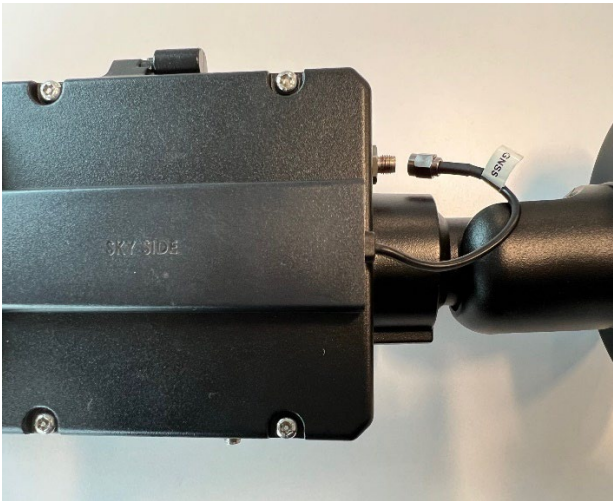


2 Installation

2.1 SIM Card Installation (if not already installed)

The following tools and parts are needed for the SIM card installation:

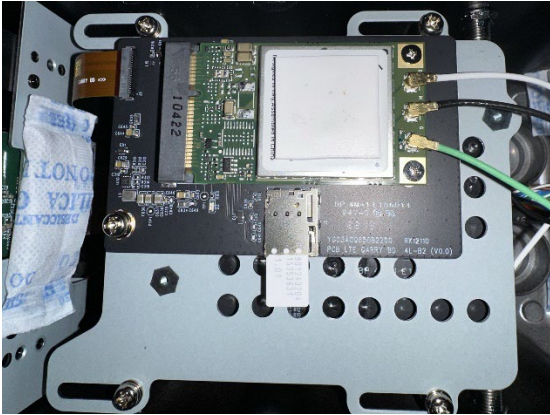
- SIM card
- Small Allen wrench
- Antenna mounting screws (2)
- Antennas (2)



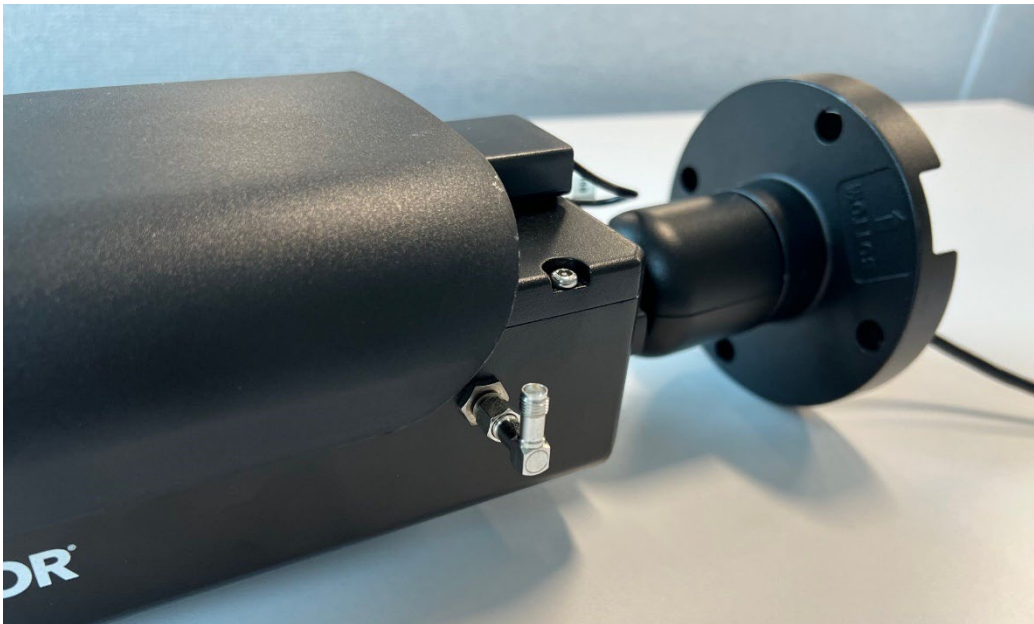
1. Disconnect the cable for the GPS module.
2. Remove the 6 screws in the top cover plate of the Edge Pro using the Allen wrench.



3. Pop the SIM card out of the card, down to the smallest card.



4. Insert the SIM card into the slot on the bottom center of the carrier board.
5. Re-attach the cable for the GPS module and the camera cover, using the 6 screws.
NOTE: Ensure that the camera cover is fit, flush, and secured with the screws to avoid weather damage and voiding the warranty.
6. Locate the antenna studs on each side of the camera.



7. Attach the L-shaped antenna mounting screws so that each screw is facing up.



8. Attach an antenna to each side of the camera.

2.2 Sun Shield Cover

Use a Philips screwdriver to install the sun shield cover, as shown below, then adjust the cover to the positioning most suitable for the sun angle at the camera installation location.



2.3 Mounting Bracket Assembly

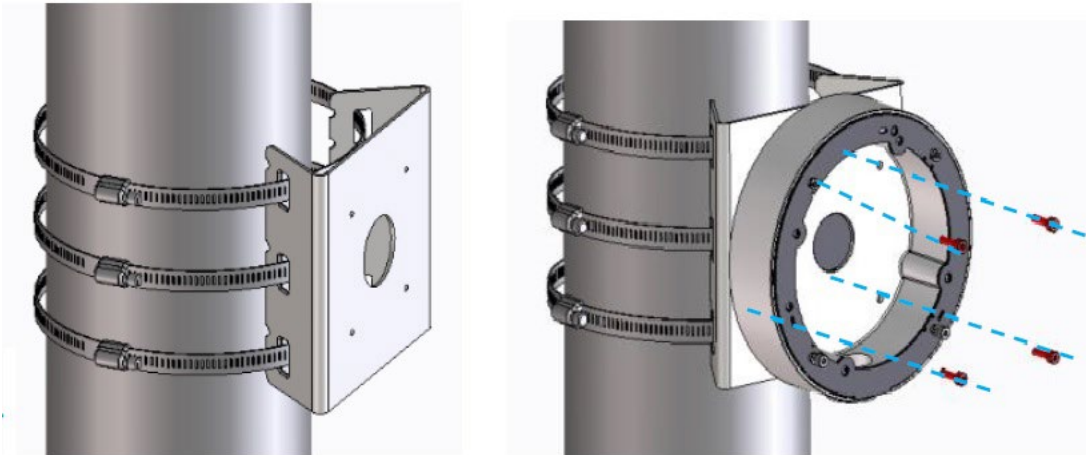
1. Disassemble the top of the mounting base from the bottom of the mounting base plate.
2. Drill a hole for ethernet cable into the mounting structure (pole, building, etc.). This cable will feed into the base plate.
3. Attach the base plate to the pole, using the appropriate hardware.
4. Attach the camera to the mounting base using the included hardware, ensuring the rubber grommet is positioned so that
5. cables can be fed through the slits in the grommet.
6. Once the camera is secure, attach the mounting base to the base plate that was previously attached to the structure.

Note: Don't forget to plug in the ethernet cable before mounting.



2.4 Pole Mounting

1. Open the hose clamps and thread them through the installation holes on the mounting bracket. Use hose clamps to affix and install the pole-mount bracket to the pole.
2. Place the junction box on the pole-mount bracket so that the arrows of bottom point to the ground as well as. Then use 4 screws to mount the junction box on to the pole-mount bracket.



3. Use 4 screws to fix the camera onto the cover of junction box.
4. Clip the safety rope of the cover of the junction box to the bottom of the junction box.
5. Thread the cables through the junction and attach them to the camera pigtails.
6. Finally, tighten the screws to fix the cover onto the junction box in place.

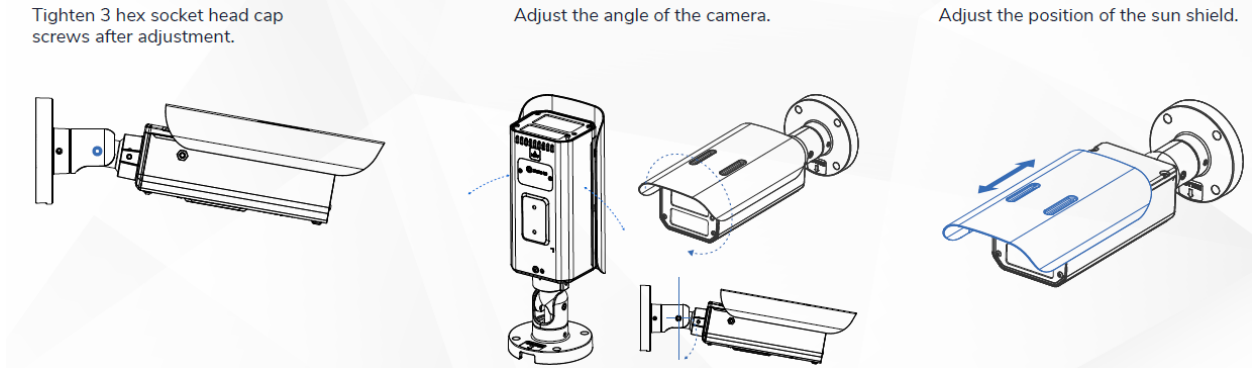


7. Loosen the three hex socket bolts and adjust the camera to the required angle. Then re-tighten the screws, and adjust the position of the sunshield.

Tighten 3 hex socket head cap screws after adjustment.

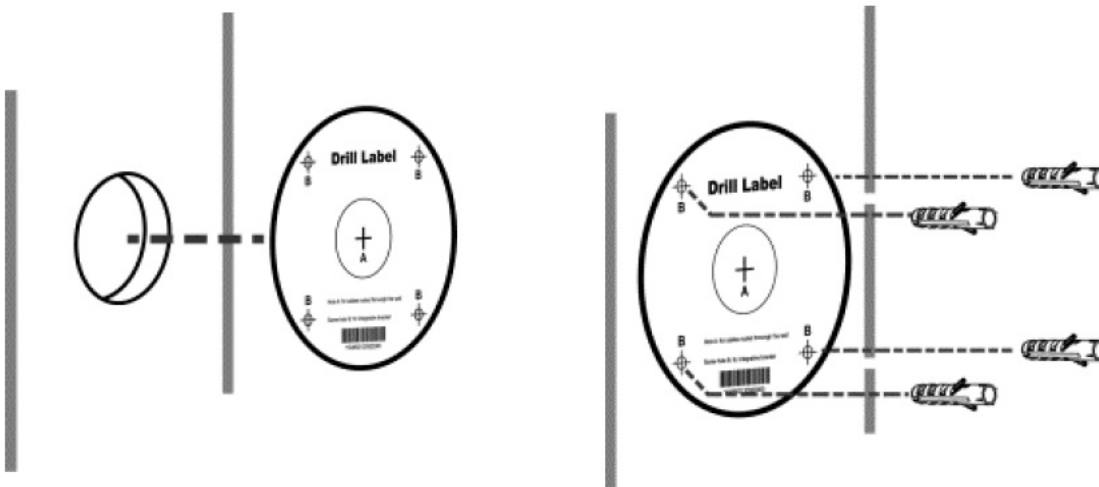
Adjust the angle of the camera.

Adjust the position of the sun shield.



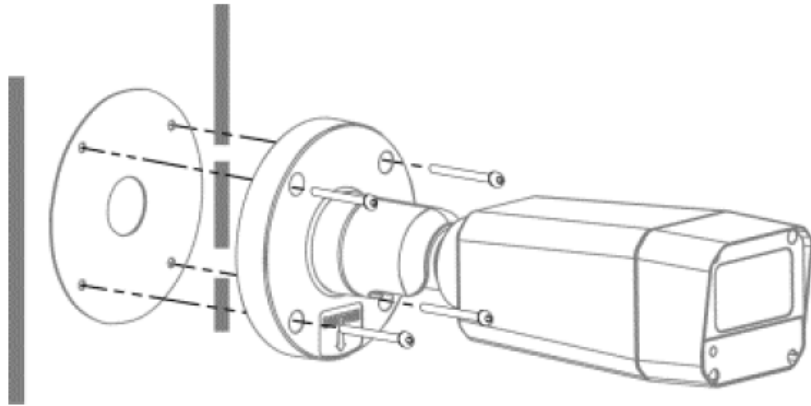
2.5 External Wall Mounting

1. Confirm that the cable outlet on the wall is large enough for the pigtails to pass through. Affix the drilling sticker to the camera installation position and ensure that the center of the sticker matches the cable outlet on the wall.
2. Use a 5mm drill bit to drill four 35mm deep holes in the positions marked by the drilling sticker. Use a hammer to carefully drive the white plastic expansion tubes into the holes.



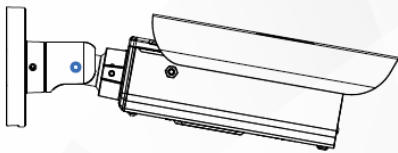
3. Connect the external cabling to the camera pigtails, insulate the connections (see Cable Connections), and feed the cabling through the cable entry on the wall.
4. Fasten the tapping screws.

NOTE: Make sure the cable outlet at the camera base is installed facing downwards and is sealed with waterproof glue or caulking to prevent water from getting into the camera.

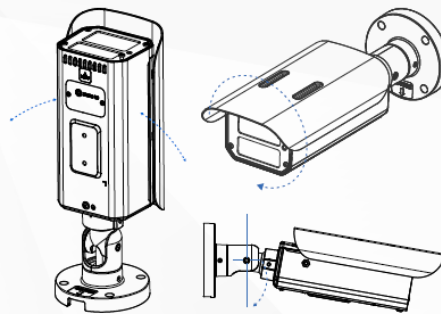


5. Loosen the three hex socket bolts and adjust the camera to the required angle. Then re-tighten the screws and adjust the position of the sun shield.

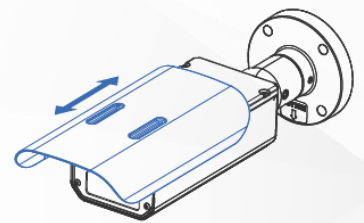
Tighten 3 hex socket head cap screws after adjustment.



Adjust the angle of the camera.



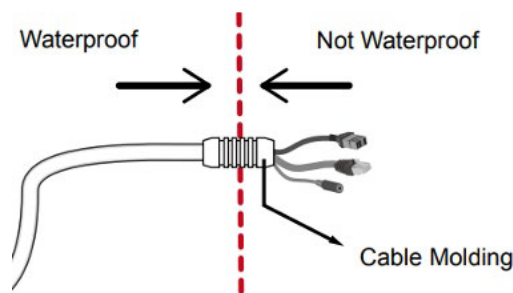
Adjust the position of the sun shield.



2.6 Cable Connections

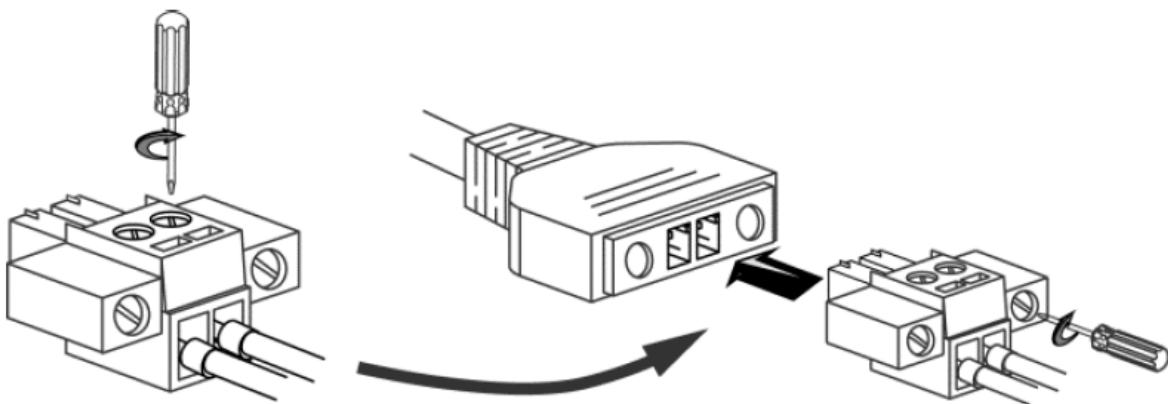
2.6.1 Safety Precautions

- The lightning arrester must be installed and grounded if the camera is installed outdoors.
- Strong and weak current cables must be kept at least 3" apart from each other. When connecting the cables to the device, take care to avoid connecting strong current cables close to weak current interfaces or the device could be damaged.
- Wrap all pigtail cables in insulated, waterproof, rubber tape to prevent short circuits or water damage.



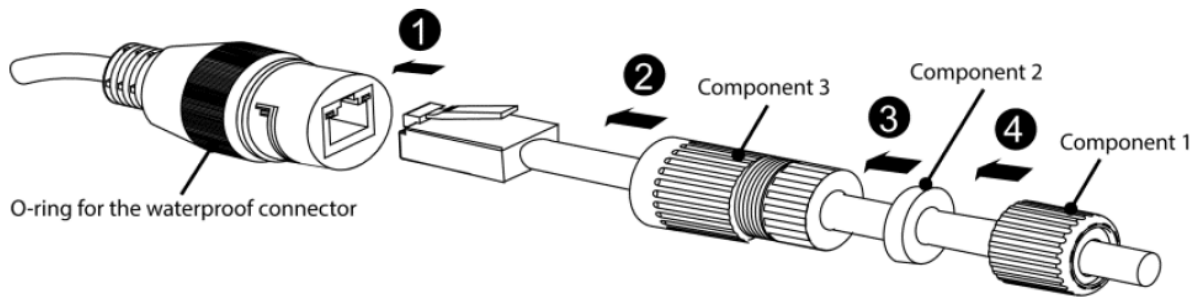
2.6.2 Power Cable Connection

Connect the ground cable to ground the device, then connect the power cable. If crimp terminals are not used, the wire thickness cannot exceed 1.5mm², and the length cannot exceed 25m. If crimp terminals are used, the wire can be up to 0.75mm² for a 15 m length of wiring or up to 1.0mm² if 20 m is required. Longer wiring is not supported. The ground impedance cannot exceed 5 ohms.



2.6.3 Ethernet/POE Connection

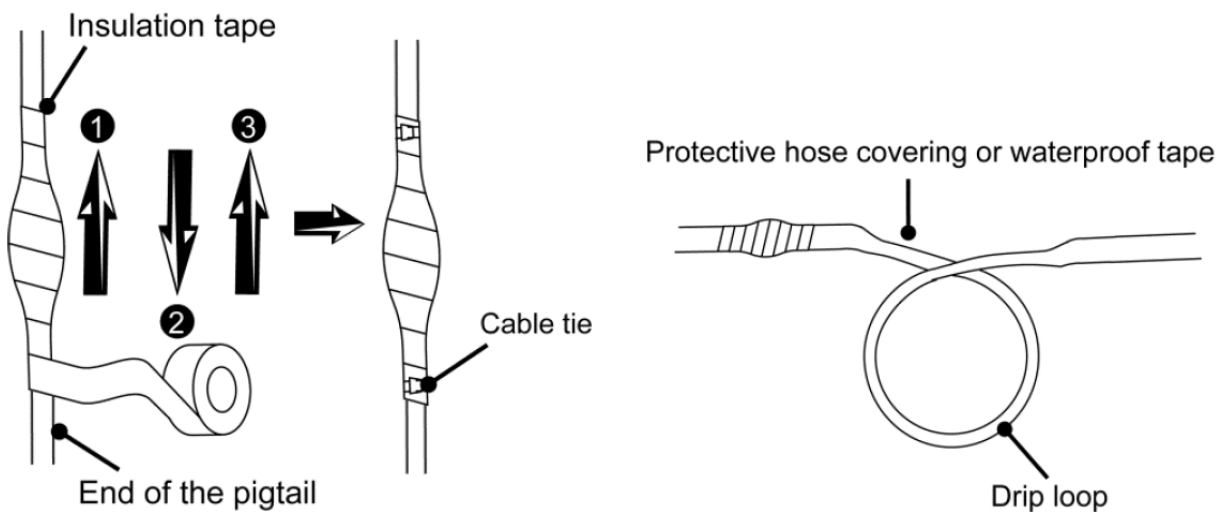
Connect the network cable. Mount the number O-ring for the waterproof connector onto the network cable port and install the remaining components of the waterproof connector in the sequence shown below. The waterproof connectors of the network cable must be secured tightly.



2.6.4 Cable Waterproofing and Insulation

Waterproof and insulate all cables including power cables, network cables, and unused pigtails.

1. Wrap one layer of insulation tape around each cable joint.
2. Stretch the waterproofing tape evenly to twice its original length. Then apply it for three layers from bottom to top, from top to bottom, and from bottom to top again.
3. Stretch the insulation tape evenly to twice its original length. Then apply it for three layers from bottom to top, from top to bottom, and from bottom to top again. Finally tie the upper and lower ends with cable ties. Then use cable ties to secure both ends.
4. Cover the rest of the cabling in a conduit or with protective waterproof rubber tape. Make a drip loop as shown below to create an artificial lowest point of the cable.



3 Installation Checklist

| | Result |
|---|--|
| The SIM card is installed. | Yes <input type="checkbox"/> No <input type="checkbox"/> |
| The camera is securely installed to the pole or wall. | Yes <input type="checkbox"/> No <input type="checkbox"/> |
| The ambient temperature meets the device specifications. | Yes <input type="checkbox"/> No <input type="checkbox"/> |
| Insulation and waterproofing measures have been taken to protect cables installed in humid environments, and the drip loops are in the correct positions. | Yes <input type="checkbox"/> No <input type="checkbox"/> |
| The camera can power on normally. | Yes <input type="checkbox"/> No <input type="checkbox"/> |
| The camera web portal can be accessed using the IP address that was configured. | Yes <input type="checkbox"/> No <input type="checkbox"/> |
| On the camera web portal, the live video from the camera can be viewed. | Yes <input type="checkbox"/> No <input type="checkbox"/> |
| The surveillance from camera web pages can be viewed and the image is clear. | Yes <input type="checkbox"/> No <input type="checkbox"/> |
| In night vision mode, the surveillance can be viewed clearly. | Yes <input type="checkbox"/> No <input type="checkbox"/> |